

Creation Research Science Education Foundation, Inc.

# WORLD BY DESIGN<sup>®</sup>

## NEWSLETTER

November 2022 - February 2023

EDITOR: TERRY IVERS



### Table of Contents

#### [Page 1](#)

**What sin are you most proud of committing?**

By Robert Moak,  
President of CRSEF

#### [Page 2](#)

**The Biblical model of creation may better explain recent Webb telescope findings.**

By Eric J. Norman, PH. D

#### [Page 3](#)

**Equal at the Feet of Jesus**

By Bob Bernet

#### [Page 4](#)

**"Letter To The American Church"**

By Terry Ivers

#### [Page 5](#)

**Editor's Thoughts**

#### [Page 6](#)

**CRSEF Monthly Programs**

#### [Page 12](#)

**Remember your Creator in the days of your youth!**

By Mike Snavelly

#### [Page 13](#)

**Evolution & Pop Culture**

By David Rives

#### [Page 22](#)

**Kid's Fun Page**

#### [Page 24](#)

**CRSEF Donation Form**

### What sin are you most proud of committing?

By Robert Moak,  
President of CRSEF

Today in the USA we hear about people shooting or stabbing each other every night on the local news reports. Then quite often we hear about some person buying a high-powered firearm and using it to gun down multiple people anywhere people may be congregating. In this once great country, we now allow people to buy assault long guns, which allow firing huge bursts of bullets, and thus allowing them to wound or kill large numbers of people who are attending some type of attraction, or by just going to a school.

Then there are reports of some person driving their vehicle through a crowd of people, thus maiming, or killing several people in each such incident. Of course, the single or, one-on-one attacks continue to occur on a regular basis.

Recently, in Japan, a man was shot and killed by a person who was using a gun, which he had made. The reason he made this gun is that apparently, it is very difficult for anyone to buy a weapon that can be used to kill a human being in Japan. The strangest thing about this report is that **this was the first man killed by gunfire in Japan in 2022.**

To date in 2022, there have been approximately 22,000 people killed by gunfire in the US, see the information obtained from the Gun Violence Archive website <https://www.insider.com/number-of-mass-shootingsin-america-this-year-2022-5>. The Gun Violence Archive has counted at least 314 mass shootings in the US, so far in 2022. More than 22,000 people have died due to gun violence overall in 2022, according to the Archive. An expert told Insider it's difficult to predict whether this year will be deadlier than last year.

It makes me ask a difficult question about such statics in the Land of the Free and the Home of the Brave! Why and how has life been so devalued that individuals would decide that it is okay to go hunting for human beings to kill? Rapid-firing high-powered weapons were designed to be used to kill humans, but the intent was that such weapons would only be used in wartime against the enemies of the country being defended.

*(Continued on page 14)*

The WORLD BY DESIGN Newsletter is being emailed to you because at some time you have asked us to send you a copy of the newsletter. We hope that you will enjoy reading and staying informed about CRSEF's ministry to introduce and educate people about Young Earth Creation. If you would like to subscribe to the newsletter email us at [subscribe\\_wbd@twc.com](mailto:subscribe_wbd@twc.com). If you would like to be removed from our mailing list please send an email to us at [unsubscribe\\_wbd@twc.com](mailto:unsubscribe_wbd@twc.com).

### The Biblical model of creation may better explain recent Webb telescope findings.

By Eric J. Norman, PH. D

Perhaps the most compelling argument against a six-day, recent creation is that light from distant galaxies indicates they are vast distances away from Earth.

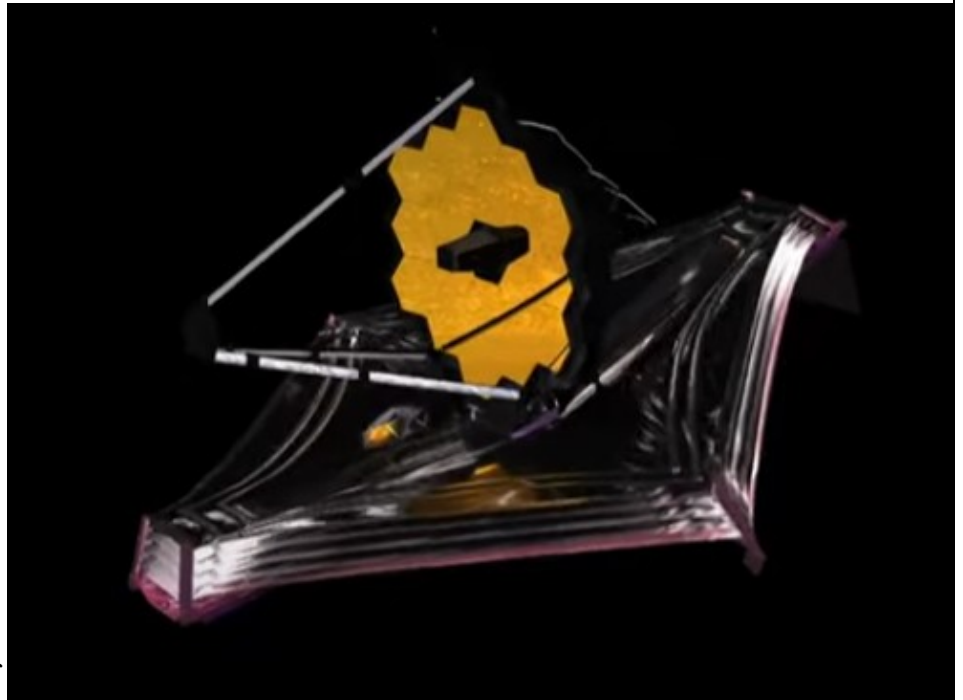
The science of astronomy is fascinating and uplifting. “The heavens tell the glory of God.” Psalm 19:1. I thoroughly enjoyed the course on astronomy I took in college as an elective for my BS in Physics.

Scientists studying the universe do excellent work defining the types of stars and galaxies and the expanding universe. However, their premises of the origin of the universe by the “Big Bang” disagrees with the Biblical account. Believe it or not, the Big Bang theory states that all matter in the universe was together in a single tiny mass that exploded, creating our beautiful, complex universe.

When I was a boy living near St. Louis, Missouri, I answered a comic book ad. I sent \$4.95 in an envelope with a return address to an out-of-state company. In about two weeks the US Post Office delivered to our house a 4-foot by 7-inch cardboard box. My brother and I and several neighborhood kids eagerly gathered in our living room to unpack it. There were Roman candles, funnels, and large firecrackers: blockbusters, M-80s, 2-inch salutes, and cherry bombs.

We took a cherry bomb and put it under a large tin can. The fuse was lit, and we ran. Kaa-blue-ee! The can went straight up and then came down a mangled metal mess. We understood even then that you do not create anything with a big explosion; explosions only destroy.

In the journal Nature, volume 608, 4 August 2022, an article was published entitled “Four revelations from the Webb telescope about distant galaxies.” The introduction said, “The telescope’s astonishingly sharp pictures have shattered astronomers’ preconceptions about the early Universe.... ‘the reality is just kind of blowing our mind,’ says Jeyhan Kartaltepe, an astronomer at the Rochester Institute of Technology in New York.”



James Webb Telescope

[PAGE 1](#)

[\(Continued on page 20\)](#)

The WORLD BY DESIGN Newsletter is being emailed to you because at some time you have asked us to send you a copy of the newsletter. We hope that you will enjoy reading and staying informed about CRSEF’s ministry to introduce and educate people about Young Earth Creation. If you would like to subscribe to the newsletter email us at [subscribe\\_wbd@twc.com](mailto:subscribe_wbd@twc.com). If you would like to be removed from our mailing list please send an email to us at [unsubscribe\\_wbd@twc.com](mailto:unsubscribe_wbd@twc.com).

### Equal at the Feet of Jesus

By Bob Bernet  
Author , Speaker

Luke 10:38 The parable of Martha and Mary is known by many. Martha was busy with the domestic chores and Mary was sitting with Jesus. Martha was upset that Mary was not helping with the chores. Martha said to Jesus “Lord, don’t you care that my sister has left me to do the work by myself? Tell her to help me!”<sup>41</sup> “Martha, Martha,” the Lord answered, “you are worried and upset about many things,<sup>42</sup> but few things are needed—or indeed only one.<sup>[1]</sup> Mary has chosen what is better, and it will not be taken away from her.”

This is the first time in human history that a woman was known to sit at the feet of a Rabbi, and to spend time discussing spiritual things with men instead of helping with domestic chores. Jesus let Martha and the rest of the world know that sitting at his feet listening to Him talk about the Kingdom of God is the “one thing” we should be doing that is more important than anything else.

It was the beginning of the Women’s Rights movement, the Human Rights movement, and one of many instances where Jesus was trying to help humans understand that understanding spiritual laws and the laws of God, is more important than knowing physical laws.

We are All Equal and important at the feet of Jesus.

[thespiritualpuzzle.com](http://thespiritualpuzzle.com)

[bob2i.podbean.com](http://bob2i.podbean.com)



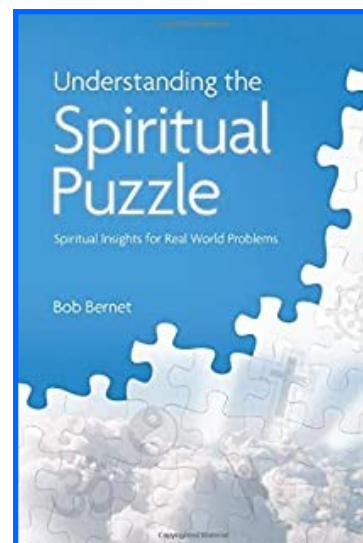
**Bob Bernet**

Author, Speaker

513.235.8182

[thespiritualpuzzle.com](http://thespiritualpuzzle.com)

Podcast: [bob2i.podbean.com](http://bob2i.podbean.com)



**"Letter To The American Church"**

A Review By Terry Ivers

For the past few years, I have been trying to convey a certain message to the readers of the World By Design Newsletter, through my Editor's Notes and articles that I have written. I pray that my message has been somewhat consistent. I am a student of history, whether it be world history, church history, or American history, I firmly believe that if we don't learn from our past mistakes, we will repeat them in the future! That being said, it is also important that we study true history and not the revisionist history that has been around for the past century. As I was preparing to write an article for this edition I came upon a new book that exemplified my position so much better than I have ever stated it in any of my writings, I wish all pastors and church members would read this book.

On September 20th, 2022, *"Letter to the American Church"* by bestselling author and speaker Eric Metaxas was released. Metaxas's previous book, *"Bonhoeffer: Pastor, Martyr, Prophet, Spy"* was a bestselling biography in 2011 when it was released. Through the research and study for this book, Metaxas started to see the frightening comparisons between the Church in America today and the Church in Nazi Germany in the 1930s.

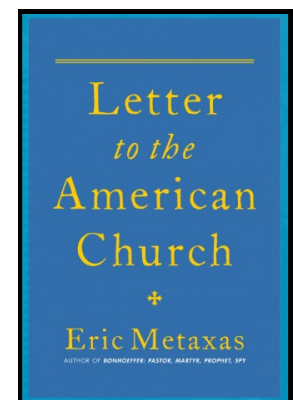
"Letter to the American Church" is a well-written book that is easy to read and is comparatively short. The author uses the actions of Dietrich Bonhoeffer during the early 1930s political environment taking place in Germany to show how the German Church was asleep. Just as the prophet Jeremiah warned of the upcoming judgment of Judea, so was Bonhoeffer warning the German Church of their impending judgment. Beginning with Bonhoeffer's sermon on Reformation Sunday, November 6, 1932, the author reveals the unwillingness of the German Church to pay heed to any and all of Bonhoeffer's warnings.

Throughout the book, Metaxas shows example after example of the comparisons of the German Church of the 1930s and the American Church today, he does this through scripture and theology, as well as documented history. In the latter chapters of the book, Metaxas makes it apparent that the American Church needs to wake up and be ready to respond. Metaxas uses the Parable of the Talents to show us that Jesus does not expect us to sit back and do nothing with what God has given us. It is up to the American Church and each of us who God has called to stand against the Godless tyranny that our Nation currently faces.



**Eric Metaxas** is the *New York Times* #1 bestselling author of *Letter to the American Church*, *Is Atheism Dead?*, *Fish Out of Water*, *Martin Luther*, *If You Can Keep It*, *Bonhoeffer*, *Miracles*, *Seven Women*, *Seven Men*, and *Amazing Grace*. He has written more than thirty children's books, including the bestsellers *Squanto and the Miracle of Thanksgiving* and *It's Time to Sleep, My Love*, illustrated by Nancy Tillman. His books have been translated into more than twenty-five languages.

[ericmetaxas.com](http://ericmetaxas.com)



PAGE 1

The WORLD BY DESIGN Newsletter is being emailed to you because at some time you have asked us to send you a copy of the newsletter. We hope that you will enjoy reading and staying informed about CRSEF's ministry to introduce and educate people about Young Earth Creation. If you would like to subscribe to the newsletter email us at [subscribe\\_wbd@twc.com](mailto:subscribe_wbd@twc.com). If you would like to be removed from our mailing list please send an email to us at [unsubscribe\\_wbd@twc.com](mailto:unsubscribe_wbd@twc.com).

## EDITOR'S THOUGHTS?

By Terry Ivery

"I think the whole d... thing  
is overexaggerated. . ."

Harry R Truman, March 31st 1980  
The Longview Daily News

Thankfully, because of the Sovereignty of our God, we are once again publishing the latest edition of the World by Design Newsletter. The past two years have been very hard for many Americans, Christians and, non-Christians alike. In the Cultural climate, we are living in it has become more obvious to me that we are currently living under the judgment of God which Paul spoke of in Romans 1:18-32. As I am writing this we are still fifteen days away from an election that could fundamentally change America forever. Only by God's grace and mercy will America be able to return to the Nation that our Founding Fathers envisioned it to be.

As Christians, especially in America, we have a Godly duty to take elections seriously. Christians must understand that God has ordained three different institutions of authority, they are, the Church, the Family, and the State, all three fall under the authority of God. Because we live in America we presently are given the responsibility to help choose the people that will govern us. This is why whom we are voting for becomes one of the greatest decisions a Christian will make. In Romans 12 :2 the apostle Paul tells us:

*<sup>2</sup> Do not be conformed to this age, but be transformed by the renewing of your mind, so that you may discern what is the good, pleasing, and perfect will of God.* Romans 12:2 CSB

Christians, when it is your turn to vote, be deliberate, pray about the candidates and the issues, but most importantly know and understand what you are voting for, or for whom you are casting your vote. These people will end up governing the world that you and your children and their children will have to live in. Let the Scriptures and prayer guide your decisions, not, TV talking heads or mainstream media. The world we live in was created by a loving God, so it should go without saying that if we let the naturalistic, atheistic, pagan world help make our choices, judgment is what we deserve!

CRSEF, the board, and our members want this newsletter to be informative and educational so that you can interact positively with your family, friends, and neighbors. When you engage in cultural discussions and people have questions or opinions, it is necessary to have decisive Biblical answers, so that we can then share the good news of Christ with them.

We welcome your questions and concerns and ask that you send us information and articles that you would want us to share in upcoming issues of the World By Design Newsletter. Thank you for your interest and involvement in CRSEF and we look forward to hearing from you, we may be contacted at [editor\\_wbdnewsletter@twc.com](mailto:editor_wbdnewsletter@twc.com) or [rlmoak@fuse.net](mailto:rlmoak@fuse.net).

[worldbydesign.org](http://worldbydesign.org)

PAGE 1

The WORLD BY DESIGN Newsletter is being emailed to you because at some time you have asked us to send you a copy of the newsletter. We hope that you will enjoy reading and staying informed about CRSEF's ministry to introduce and educate people about Young Earth Creation. If you would like to subscribe to the newsletter email us at [subscribe\\_wbd@twc.com](mailto:subscribe_wbd@twc.com). If you would like to be removed from our mailing list please send an email to us at [unsubscribe\\_wbd@twc.com](mailto:unsubscribe_wbd@twc.com).



## CRSEF

### Monthly Program Schedule

CRSEF's monthly presentations are given at a public library or a local church on the third Thursday of each month. All presentations are planned to run from 7-8:15 PM followed by a 15 minute, or longer, Q&A time. Please plan to come and **invite your friends and neighbors too**, as usual there is no charge for this program!

#### CRSEF Monthly Program for November Thursday, November 17th 2022

**Thursday, 11/17/2022 - From 7-8:15 PM followed by a 15 minute, Q&A time**

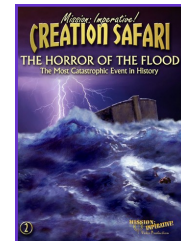
A video will be shown entitled, **“The Horror of the Flood”** The Most Catastrophic Event in History, featuring Mike Snavelly President of Mission: Imperative! 70 minutes

*“If an event as cataclysmic as a global flood (and its implications) was ignored, for any reason, major errors or misunderstandings would creep into science and society” ~ Dr. Walt Brown*

Indeed, many such misunderstandings have in fact crept in, such as evolutionary explanations for geological features (fossils, strata layers, mountain ranges, etc.). But, these very features speak of a rapid catastrophe, not slow processes. This session covers key aspects of the flood by answering many questions, including:

1. Is there physical evidence for a global flood?
2. Why was there a flood?
3. What happened, and how?
4. What was the ark really like? Could the animals really fit in?
5. What did the flood cause?

[Click for Demo](#)



This seminar includes exclusive explanations and animations of the hydro plate theory, proposed by Dr. Brown. This theory provides a fascinating, yet biblically accurate and scientifically feasible look at how this deluge might have taken place. It also provides the answer for the issue of where all the water would have come from, and where it went afterwards!

The flood. A cataclysmic event that still has profound implications for us today. Furthermore, it provides us with a look at God’s terrible judgment of the past, and a warning for the one to come!

*“Past failure to answer honest flood questions opened the door to evolution. Answering them will begin to reestablish the flood as Earth’s defining geological event...” ~ Dr. Walt Brown*

**Presenter:** Bob Moak will field questions after the video

**Location:** Brecon United Methodist Church

**Directions:** [Get Map and Directions](#)

**Website:** [Visit Website](#)

[PAGE 1](#)

[\(Next Month \(page 7\)\)](#)



## CRSEF Monthly Program Schedule

CRSEF's monthly presentations are given at a public library or a local church on the third Thursday of each month. All presentations are planned to run from 7-8:15 PM followed by a 15 minute, or longer, Q&A time. Please plan to come and **invite your friends and neighbors too**, as usual there is no charge for this program!

### CRSEF Monthly Program for December Sunday, December 25th 2022

**Event: CRSEF Monthly Program– Program is held in December!**

**MERRY CHRISTMAS!**

**Presenter:** God will present His Son to the world!

**Location:** O Little town of Bethlehem



**If you want to see the latest status of this program**, and/or to see other upcoming programs, connect to the CRSEF website: <https://www.worldbydesign.org/events.html>

**If you want to donate to CRSEF**, so we can offer programs that emphasize Biblical authority click on the following website address: <https://www.worldbydesign.org/donate-to-crsef.html> and then follow the instructions to donate by PayPal or by credit card.

*PAGE 1*

*(Next Month (page 8))*

The WORLD BY DESIGN Newsletter is being emailed to you because at some time you have asked us to send you a copy of the newsletter. We hope that you will enjoy reading and staying informed about CRSEF's ministry to introduce and educate people about Young Earth Creation. If you would like to subscribe to the newsletter email us at [subscribe\\_wbd@twc.com](mailto:subscribe_wbd@twc.com). If you would like to be removed from our mailing list please send an email to us at [unsubscribe\\_wbd@twc.com](mailto:unsubscribe_wbd@twc.com).



## CRSEF Monthly Program Schedule

CRSEF's monthly presentations are given at a public library or a local church on the third Thursday of each month. All presentations are planned to run from 7-8:15 PM followed by a 15 minute, or longer, Q&A time.

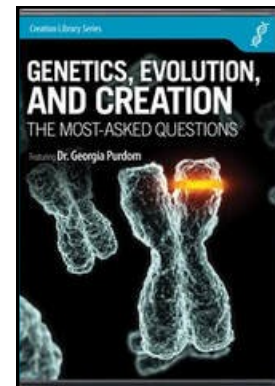
Please plan to come and **invite your friends and neighbors too**, as usual there is no charge for this program!

### CRSEF Monthly Program for January Thursday, January 19th 2023

**Thursday, 01/19/2023 - From 7-8:15 PM followed by a 15 minute, Q&A time**

A video will be shown entitled, "Genetics, Evolution, AND CREATION" featuring Dr. Georgia Purdom of AiG (60 minutes)

From gene duplication to beneficial mutations, more and more evolutionists are attempting to use discoveries in the field of genetics as proof for common ancestry of life on earth. In this informative new DVD, Georgia Purdom (PhD, molecular genetics) examines these arguments and shows why they are not evidence for common ancestry. Using non-technical language and illustrations, Dr. Purdom examines mitochondrial Eve, proposed human chromosome 2 fusion, ancient repetitive elements (AREs), gene duplication, and beneficial mutations to demonstrate that these "proofs" of evolution are nothing of the kind, but rather can easily be explained from a biblical worldview.



**Presenter:** Bob Moak will field questions after the video

**Location:** Brecon United Methodist Church

**Directions:** [Get Map and Directions](#)

**Website:** [Visit Website](#)

**If you want to see the latest status of this program**, and/or to see other upcoming programs, connect to the CRSEF website: <https://www.worldbydesign.org/events.html>

**If you want to donate to CRSEF**, so we can offer programs that emphasize Biblical authority click on the following website address: <https://www.worldbydesign.org/donate-to-crsef.html> and then follow the instructions to donate by PayPal or by credit card.

*PAGE 1*

*( Next Month ( page 9 ) )*

The WORLD BY DESIGN Newsletter is being emailed to you because at some time you have asked us to send you a copy of the newsletter. We hope that you will enjoy reading and staying informed about CRSEF's ministry to introduce and educate people about Young Earth Creation. If you would like to subscribe to the newsletter email us at [subscribe\\_wbd@twc.com](mailto:subscribe_wbd@twc.com). If you would like to be removed from our mailing list please send an email to us at [unsubscribe\\_wbd@twc.com](mailto:unsubscribe_wbd@twc.com).





## CRSEF Monthly Program Schedule

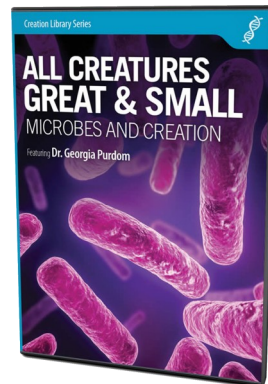
CRSEF's monthly presentations are given at a public library or a local church on the third Thursday of each month. All presentations are planned to run from 7-8:15 PM followed by a 15 minute, or longer, Q&A time. Please plan to come and **invite your friends and neighbors too**, as usual there is no charge for this program!

### CRSEF Monthly Program for February Thursday, February 16th 2023

**Thursday, 02/16/2023 - From 7-8:15 PM followed by a 15 minute, Q&A time**

A video will be shown entitled, "All Creatures Great & Small" featuring Dr. Georgia Purdom of AiG (61 minutes)

The Bible does not specifically mention microbes (i.e., bacteria) but they are nonetheless living organisms created by God during the Creation Week. Although usually associated with disease, the vast majority of microbes serve important positive functions from digestion to cycling of nutrients in ecosystems.



**Presenter:** Bob Moak will field questions after the video

**Location:** Brecon United Methodist Church

**Directions:** [Get Map and Directions](#)

**Website:** [Visit Website](#)

**If you want to see the latest status of this program**, and/or to see other upcoming programs, connect to the CRSEF website: <https://www.worldbydesign.org/events.html>

**If you want to donate to CRSEF**, so we can offer programs that emphasize Biblical authority click on the following website address: <https://www.worldbydesign.org/donate-to-crsef.html> and then follow the instructions to donate by PayPal or by credit card.



## CRSEF Monthly Program Schedule

CRSEF's monthly presentations are given at a public library or a local church on the third Thursday of each month. All presentations are planned to run from 7-8:15 PM followed by a 15 minute, or longer, Q&A time. Please plan to come and **invite your friends and neighbors too**, as usual there is no charge for this program!

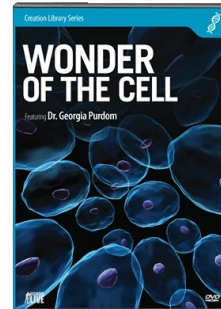
### CRSEF Monthly Program for March Thursday, March 16th 2023

**Thursday, 03/16/2023 - From 7-8:15 PM followed by a 15 minute, Q&A time**

A video will be shown entitled, "Wonder of the Cell" featuring Dr. Georgia Purdom of AiG (48 minutes)

Dr. Georgia Purdom uses her intimate knowledge of the inner workings of a human cell to provide a glimpse into its amazing complexity. Detailed computer animations show how the intricate "machinery" working in a single cell can only be explained as the handiwork of the Master Designer.

The cells of our bodies exhibit many amazing designs. They are miniature factories that perform thousands of jobs every second! In this DVD, Dr. Purdom explores the complexities and inner working of the cell using visually stunning animations. Journey through the bloodstream to investigate how white blood cells eliminate a bacterial infection. You will encounter proteins that literally "walk" down cellular "highways" and cells that dramatically change their shape. As a result, you will gain a greater appreciation for love and the designs of Creator God. (48 minutes)



**Presenter:** Bob Moak will field questions after the video

**Location:** Brecon United Methodist Church

**Directions:** [Get Map and Directions](#)

**Website:** [Visit Website](#)

**If you want to see the latest status of this program**, and/or to see other upcoming programs, connect to the CRSEF website: <https://www.worldbydesign.org/events.html>

**If you want to donate to CRSEF**, so we can offer programs that emphasize Biblical authority click on the following website address: <https://www.worldbydesign.org/donate-to-crsef.html> and then follow the instructions to donate by PayPal or by credit card.

**CRSEF**  
**Monthly Program Information**  
**and Driving Instructions**

**Driving Directions:**

**Brecon United Methodist Church**

7388 E Kemper Rd  
Cincinnati, OH 45249-1033  
(513) 489-7021

**Driving Directions:**

**From I-71**

Merge onto I-275 W toward I-75  
Take the REED HARTMAN HIGHWAY exit- EXIT 47  
Turn LEFT onto REED HARTMAN HWY  
Turn LEFT onto ramp (To KEMPER ROAD)  
Turn RIGHT onto E KEMPER RD  
Proceed on Kemper Road about ½ mile, the church is on the left side of the road.

**From I-75**

Merge onto I-275 E toward I-71  
Take the REED HARTMAN HIGHWAY exit- EXIT 47  
Stay to the left and then from the right lane  
Turn RIGHT onto REED HARTMAN HWY  
Turn LEFT onto the ramp (To KEMPER ROAD)  
Turn RIGHT onto E KEMPER RD  
Proceed on Kemper Road about ½ mile, the church is on the left side of the road.

Enter the church from the parking lot through the back door; then proceed to the sanctuary, see the lighted sanctuary sign, just slightly to the left of the entry door.



[PAGE 1](#)



### Remember your Creator in the days of your youth!

What do a warthog and a mongoose have in common? Not much. They are completely different types of mammals, both found in South Africa. Warthogs are basically grazers, and eat a variety of plants, berries, bulbs, and roots. Mongooses, on the other hand, are active carnivores. They eat all kinds of bugs, lizards, rodents, and anything else they can catch. They are also known to take down venomous snakes, like cobras. This fact has earned them quite a reputation!

But, the world of the warthog, and the world of the banded mongoose come together, on occasion, in a very remarkable way! There is a strange symbiotic relationship between these two very different creatures. They don't need each other to survive, but this strange relationship does prove mutually beneficial.

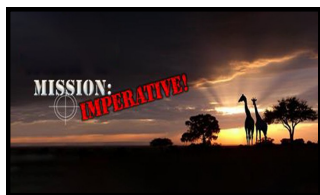
Warthogs, like many creatures, get plagued with pests, like ticks. Besides taking a mud bath when things are wet, they have no way of ridding themselves of these. But, they somehow know, when they see a pack of mongooses, that they are headed for relief. The mongooses, for their part, know inherently that they are going to get a free meal. So, they approach each other, and the warthog will lie down - and be groomed! The mongooses will climb all over the warthog, ridding it of all the pests! When they're done, they go their separate ways, each satisfied with the encounter!

How does each creature, quite different from the other, know what to do as they approach the other? How does any symbiotic relationship happen? Or does it just happen? Or, are the creatures programmed to do this? If so, then there's design behind it! The two buttons below will take you to two short videos showing this unique event.



[This warthog took a trip to the mongoose](#)

[The Smart Way Warthogs Keep Insects at Bay](#)



<https://www.missionimperative.org/>

[PAGE 1](#)

### Evolution & Pop Culture

If you pay attention while you're watching TV shows and movies, you might be surprised by the amount of evolutionary content the writers and producers work into the finished product. Everything from kids' movies about the Ice Age, to Flintstones cartoons, to sci-fi movies have subtle (or not-so-subtle) messages of evolution or millions of years.

This is especially common within the science fiction genre of films. Many of them feature back stories that dip into the far distant past or alien civilizations that have evolved elsewhere in the universe. Indeed, this genre started to become popular with the widespread acceptance of evolutionary ideas and one of the "fathers of sci-fi" was ardently anti-Christian and a committed evolutionist.

Actually, the whole idea of alien civilizations or finding extraterrestrial life comes from an evolutionary worldview. If life evolved here on earth, then it simply must have evolved somewhere else in the universe because we can't be special. There must be other life somewhere! And yet, in the real world, this other life that's supposedly out there remains elusive.

But from a biblical perspective, God created earth to be inhabited so it isn't likely we'll find intelligent life on distant planets. Also, Adam's sin effected the entire universe and yet Jesus came to earth as God and man to save descendants of Adam. So, if there are other intelligent beings, they aren't descendants of Adam and yet they are suffering from the Curse but can't be saved. This is a major theological problem. Starting from God's Word we don't expect to find alien life. Also, I don't think this standpoint precludes the idea of the claimed "alien encounters and abductions" because I do believe that the spiritual realm is very real. But these "beings" don't originate from distant galaxies.

It seems movies and TV shows have been a great way of promoting evolutionary ideas. This is just another way evolution has become increasingly popular with the public. But when we study God's Word, we find that it provides the true history of the universe. Let's spend just 10 fewer minutes each day on television, and unwind with a good Book. You know the one I mean.

I'm David Rives. Truly...the heavens declare the glory of God.



[Click here for video version.](#)

Sign up for free monthly Creation Club Magazine

<https://davidrivesministries.org/>

PAGE 1

The WORLD BY DESIGN Newsletter is being emailed to you because at some time you have asked us to send you a copy of the newsletter. We hope that you will enjoy reading and staying informed about CRSEF's ministry to introduce and educate people about Young Earth Creation. If you would like to subscribe to the newsletter email us at [subscribe\\_wbd@twc.com](mailto:subscribe_wbd@twc.com). If you would like to be removed from our mailing list please send an email to us at [unsubscribe\\_wbd@twc.com](mailto:unsubscribe_wbd@twc.com).

**What sin are you most proud of committing? (Continued)**

The only reasons any individual would purchase such weapons is either just to own them and display them as a gun collector. They could in such a case be fired on a firing range, which would allow firing them in a way that is not dangerous to other humans. The other seeming valid reason, I've heard is an individual would buy such weapons to use them in defense of the US, if we were attacked by some enemies, and a ground war would be going on! It seems doubtful this would be a very valid excuse, as it is more likely future wars will employ the use of nuclear weapons thus few if any ground wars would occur!

Such weapons cannot likely be used legally to hunt any type of animal, so no one would buy them to use on legal hunting trips. Therefore, one of the reasons individual citizens would buy such weapons is to hunt down humans and attempt to kill them! If such weapons were banned, it would seem to reduce the number of such senseless human hunting trips! Yes, I realize this would not eliminate all murders or even all mass murders, but it would make it more difficult for one or two people to kill multiple people in one human hunting trip!

Changing the subject a bit, maybe the most heinous murders are those events where only one human being is killed before it can be born into this world. This type of murder is called abortion, and it has killed over 63 million prospective US citizens since 1973.

The following was taken from the website:

<https://www.foxnews.com/politics/abortions-since-roe-v-wade>

More than 63 million [abortions](#) are estimated to have taken place in the U.S. since the [Supreme Court's](#) 1973 [Roe v. Wade](#) ruling that granted federal protections to women seeking to terminate their pregnancies, according to one [analysis](#).

The National Right to Life Committee (NRLC), the nation's oldest pro-life organization, estimates that 63,459,781 abortions have taken place since 1973. That estimate was gathered by tracking data from the Centers for Disease Control and Prevention (CDC) and the Guttmacher Institute, which previously served as a research arm of the nation's preeminent abortion provider, Planned Parenthood.

**Abortion statistics**

1 in 4 women has had an abortion

**Only 1.5% of abortions are due to rape and incest**

In 2015, approximately 35% of all pregnancies in New York City ended in abortion (CDC)

**For African American women in NYC, more abortions happen than babies born**



[PAGE 1](#)

[\(Continued on page 15\)](#)

The WORLD BY DESIGN Newsletter is being emailed to you because at some time you have asked us to send you a copy of the newsletter. We hope that you will enjoy reading and staying informed about CRSEF's ministry to introduce and educate people about Young Earth Creation. If you would like to subscribe to the newsletter email us at [subscribe\\_wbd@twc.com](mailto:subscribe_wbd@twc.com). If you would like to be removed from our mailing list please send an email to us at [unsubscribe\\_wbd@twc.com](mailto:unsubscribe_wbd@twc.com).

**What sin are you most proud of committing? (Continued)**

## Abortion facts

As of 2019 – The New York abortion law now allows for abortions all the way to *full-term!*  
There are nearly *1,000,000 abortions per year* on average (and that's just ones reported!)  
Planned Parenthood is the nation's largest abortion provider  
A child's heart beats at 21 days. It is audible at 8-10 weeks of gestation

Abortion data for the four most recent years reported by the Guttmacher Institute appears below. The abortion ratio is the number of abortions per 100 pregnancies ending in an abortion or a live birth. From 2017 through 2020, the abortion rate rose 6.7%.<sup>[5]</sup>

Guttmacher Institute data			
year	number of abortions	abortion rate	abortion ratio
2016	874,100	13.7	18.3
2017	862,300	13.5	18.4
2019	916,460	14.2	not yet reported
2020	930,160	14.4	20.6

[PAGE 1](#)[\(Continued on page 16\)](#)

The WORLD BY DESIGN Newsletter is being emailed to you because at some time you have asked us to send you a copy of the newsletter. We hope that you will enjoy reading and staying informed about CRSEF's ministry to introduce and educate people about Young Earth Creation. If you would like to subscribe to the newsletter email us at [subscribe\\_wbd@twc.com](mailto:subscribe_wbd@twc.com). If you would like to be removed from our mailing list please send an email to us at [unsubscribe\\_wbd@twc.com](mailto:unsubscribe_wbd@twc.com).

**What sin are you most proud of committing? (Continued)**

Abortion data for the ten most recent years reported by the CDC appears below. The data comes from 47 states, excluding California, Maryland, New Hampshire, and the District of Columbia. The abortion ratio is the number of abortions per 1,000 live births. In 2018 and 2019, for the first time since 1979 and 1980, the abortion rate rose two years in a row.

CDC data			
year	number of abortions	abortion rate	abortion ratio
2010	762,755	14.6	228
2011	727,554	13.9	219
2012	696,587	13.2	210
2013	661,874	12.5	200
2014	649,849	12.1	186
2015	636,902	11.8	188
2016	623,471	11.6	186
2017	609,095	11.2	185
2018	614,820	11.3	189
2019	625,346	11.4	195

Independent clinics provide about 60% of abortions in the United States while Planned Parenthood provides about 35% of abortions in the United States.

[PAGE 1](#)[\(Continued on page 17\)](#)

The WORLD BY DESIGN Newsletter is being emailed to you because at some time you have asked us to send you a copy of the newsletter. We hope that you will enjoy reading and staying informed about CRSEF's ministry to introduce and educate people about Young Earth Creation. If you would like to subscribe to the newsletter email us at [subscribe\\_wbd@twc.com](mailto:subscribe_wbd@twc.com). If you would like to be removed from our mailing list please send an email to us at [unsubscribe\\_wbd@twc.com](mailto:unsubscribe_wbd@twc.com).



**What sin are you most proud of committing? (Continued)**

The following was taken from the book of Numbers 35:10-30 in the Bible, and it relates to God's instructions about using capital punishment, or the killing of murderers. This is not the only place in the Bible relating God's plan of the need to eliminate people who murder someone else to rid the land of people who take the life of other people. Who or what is this avenger? From the NIV Notes in my study Bible on Joshua 20:3; the "avenger of blood", also translated "kinsman redeemer" The avenger is a man with the obligation of ex-acting retribution. In other words, it was the avenger's task to kill anyone who murdered one of his relatives, who he was assigned to protect.

**Numbers 35:10-30:**

*"Speak to the Israelites and say to them: 'When you cross the Jordan into Canaan, select some towns to be your cities of refuge, to which a person who has killed someone accidentally may flee.*

*They will be places of refuge from the avenger, so that a person accused of murder may not die before he stands trial before the assembly. These six towns you give will be your cities of refuge. Give three on this side of the Jordan and three in Canaan as cities of refuge. These six towns will be a place of refuge for Israelites, aliens and any other people living among them, so that anyone who has killed another accidentally can flee there.*

*"If a man strikes someone with an iron object so that he dies, he is a murderer; **the murderer shall be put to death.** Or if anyone has a stone in his hand that could kill, and he strikes someone so that he dies, **he is a murderer; the murderer shall be put to death.** Or if anyone has a wooden object in his hand that could kill, and he hits someone so that he dies, **he is a murderer; the murderer shall be put to death.***

***The avenger of blood shall put the murderer to death; when he meets him, he shall put him to death.** If anyone with malice aforethought pushes another or throws something at him intentionally so that he dies or if in hostility he hits him with his fist so that he dies, **that person shall be put to death; he is a murderer.** The avenger of blood shall put the murderer to death when he meets him.*

*"But if without hostility someone suddenly pushes another or throws something at him unintentionally or, without seeing him, drops a stone on him that could kill him, and he dies, then since he was not his enemy and he did not intend to harm him, the assembly must judge between him and the avenger of blood according to these regulations.*

***The assembly must protect the one accused of murder from the avenger of blood and send him back to the city of refuge to which he fled.** He must stay there until the death of the high priest, who was anointed with holy oil.*

**worldbydesign.org**

**What sin are you most proud of committing? (Continued)**

*"But if the accused ever goes outside the limits of the city of refuge to which he has fled and the avenger of blood finds him outside the city, **the avenger of blood may kill the accused without being guilty of murder.** The accused must stay in his city of refuge until the death of the high priest; only after the death of the high priest may he return to his own property.*

*"These are to be legal requirements for you throughout the generations to come, wherever you live." **'Anyone who kills a person is to be put to death as a murderer only on the testimony of witnesses. But no one is to be put to death on the testimony of only one witness.***

As you may see this plan was set up to protect everyone from a person who was identified as a murderer, and it had built-in plans to also protect a person who killed someone accidentally, as such a person is not considered a murderer. As you may see our judicial systems in this country are still based loosely on these same plans. Of course, we do not have Cities of Refuge, where someone can flee, but our police are charged with protecting the innocent, at least until their trial is held.

It seems our judicial system no longer really enforces capital punishment very rigidly, and thus we see many murderers being released from prison and assumed to have been reformed and corrected to no longer think of committing murder. It makes me wonder if God has changed His mind about the need to protect those people whom the reformed murderer may still want to kill!?

The title of this article is meant to get the reader to consider what pride there may be for people who are sinners. The Bible plainly teaches that we are all sinners, so the implication here is this applies to all of us to think about. Many people in this world today have some acts they commit, and God has labeled such acts as being sinful. Certainly, this article spends a lot of time talking about murders. There are people who hold a prideful opinion of themselves because they earn a lot of money by being a hitman and they murder people as their mode of living.

Many Doctors earn a lot of money performing abortions, which is the legalized murder of unborn humans. Such babies would become citizens of the USA, if they were allowed to be born. So, there would possibly be pride in being a doctor who could perform many abortions and have a good reputation.

Then there are those people who sponsor and participate in the gay pride parades and activities, attempting to force all decenters into complying with their beliefs about same-sex relationships. Anyone who disagrees with them is labeled as haters! I was taught that we should love the sinner, but hate the sin!

As a Christian we always need to ask ourselves if we are following the commands we can study in God's Book, AKA the Holy Bible! Do the ideas of mankind take preference over God's Word? Would Jesus Christ agree with the claims of righteousness and pride from groups that practice lifestyles that the Bible teaches are not true and/or even acceptable?

[PAGE 1](#)[\(Continued on page 19\)](#)

The WORLD BY DESIGN Newsletter is being emailed to you because at some time you have asked us to send you a copy of the newsletter. We hope that you will enjoy reading and staying informed about CRSEF's ministry to introduce and educate people about Young Earth Creation. If you would like to subscribe to the newsletter email us at [subscribe\\_wbd@twc.com](mailto:subscribe_wbd@twc.com). If you would like to be removed from our mailing list please send an email to us at [unsubscribe\\_wbd@twc.com](mailto:unsubscribe_wbd@twc.com).

**What sin are you most proud of committing? (Continued)**

In Romans 1:20-32 Paul wrote about how mankind may become if they depart from what Jesus taught and begin to live as they see fit!

**Romans 1:20-32:**

*For since the creation of the world God's invisible qualities—his eternal power and divine nature—have been clearly seen, being understood from what has been made, so that men are without excuse. For although they knew God, they neither glorified him as God nor gave thanks to him, but their thinking became futile and their foolish hearts were darkened. Although they claimed to be wise, they became fools and exchanged the glory of the immortal God for images made to look like mortal man and birds and animals and reptiles.*

*Therefore God gave them over in the sinful desires of their hearts to sexual impurity for the degrading of their bodies with one another. They exchanged the truth of God for a lie, and worshipped and served created things rather than the Creator—who is for ever praised. Amen.*

*Because of this, God gave them over to shameful lusts. Even their women exchanged natural relations for unnatural ones. In the same way the men also abandoned natural relations with women and were inflamed with lust for one another. Men committed indecent acts with other men, and received in themselves the due penalty for their perversion.*

*Furthermore, since they did not think it worth while to retain the knowledge of God, he gave them over to a depraved mind, to do what ought not to be done. They have become filled with every kind of wickedness, evil, greed and depravity. They are full of envy, murder, strife, deceit and malice. They are gossips, slanderers, God-haters, insolent, arrogant and boastful; they invent ways of doing evil; they disobey their parents; they are senseless, faithless, heartless, ruthless.*

***Although they know God's righteous decree that those who do such things deserve death, they not only continue to do these very things but also approve of those who practice them.***

Again, the Bible teaches that we are all sinners, thus we all commit sins! Now the big question for you, "What sin(s) that you commit regularly do you take the most pride in doing, and do you approve of all other people who also commit such sinful action?"



[PAGE 1](#)

The WORLD BY DESIGN Newsletter is being emailed to you because at some time you have asked us to send you a copy of the newsletter. We hope that you will enjoy reading and staying informed about CRSEF's ministry to introduce and educate people about Young Earth Creation. If you would like to subscribe to the newsletter email us at [subscribe\\_wbd@twc.com](mailto:subscribe_wbd@twc.com). If you would like to be removed from our mailing list please send an email to us at [unsubscribe\\_wbd@twc.com](mailto:unsubscribe_wbd@twc.com).

**The Biblical model of creation (Continued)**

The four “revelations” from the Webb telescope were:

1. “There are an awful lot of galaxies... ‘There’s hardly any empty space that doesn’t have something,’ Kartaltepe says.”
2. “Many galaxies could be the ‘most distant’....Astronomers characterize the distance of galaxies with ... redshift....the higher the redshift, the more distant the galaxy....redshifts of 13....14....16, which would place them at just 250 million years after the Big Bang.”
3. “Some early galaxies are complex... The theory was that early galaxies were more often distorted by interactions with neighboring galaxies. ... ‘we are able to see that galaxies have disks way earlier than we thought they did,’ says Allison Kirkpatrick, an astronomer at the University of Kansas in Lawrence.... ‘will make us rethink the speed at which star formation occurs’, Kirkpatrick says.”
4. “Closer galaxies are smaller than expected.... Wren Sues, an astronomer at the University of California, Santa Cruz compared Hubble images...with Webb images....most of the massive galaxies looked much smaller than they did in Hubble images. ‘It potentially changes our whole view of how galaxy sizes evolved over time’ Sues says.”

The article concluded with a statement by Allison Kirkpatrick. “Right now I find myself lying awake at three in the morning, wondering if everything I’ve ever done is wrong.”

When scientists find their theory does not fit the facts, they revise their theory. That is the “scientific method”. Perhaps astronomers should see if the Biblical model of creation, instead of the Big Bang theory, would better fit the data.

The Bible teaches that "In the beginning, God created the heavens and the earth." Genesis 1:1. "And God made two great lights-- the greater light to rule the day the lesser light to rule the night-- and the stars. And God set them in the expanse of the heavens to give light on the earth.... 19. And there was evening and morning the fourth day." Genesis 1:16-19.

Thus, God created all the stars and galaxies on day 4 of creation about 6000 years ago.

But how do we explain the finding of science that distant galaxies are millions of light years away?

There is a simple explanation if you carefully read God's Word. "Sanctify them in the truth, your Word is truth." John 17:17

**The Biblical model of creation (Continued)**

Preparing for this topic I read Isaiah 40:22, "who stretches out the Heavens like a curtain". Later I read Isaiah 42:5: "who created the Heaven and stretched them out". I then wondered how many times this phrase is mentioned in the Bible and Googled "stretched out the Heavens".

I located a website by Paul Abramson: "Since Creation Week (6 days, 6000 years ago) the heavens have expanded. The Bible consistently uses the term a total of 17 times". He continues "Very few Bible instructions or commandments are repeated more than two or three times. Most teachings are given only once. In fact, almost nothing is repeated more than 4 or 5 times. Thus, it is very interesting (and speaks directly to our modern times) that the phrase 'The Lord has stretched (or bowed) the Heavens' is stated in the Scripture an incredible 17 times".

He lists the 17 scriptures on his website: ie. 2 Sam 22:10, Job 9:8, Job 26:7, Job 37:18, Psalm 18:9, Psalm 104:2, Psalm 144:5, Isaiah 40:22, Isaiah 42:5, Isaiah 44:24, Isaiah 45:12, Isaiah 48:13, Isaiah 51:13, Jeremiah 10:12, Jeremiah 51:15 Ezekiah 1:22 and Zechariah 12:1.

I was witnessing to a scientist who said "Why would God just leave us down here with no guidance"? I answered, "You have God's Word, His 'Instruction book' the Bible. You need to read it. It's amazing how many things God makes as clear as day when we read His Word.

"Stretching out the Heavens" is an example. This concept is important, don't miss it. See John 17:17 above.

"Who is a God like you, pardoning iniquity and passing over transgression." Micah 7:18 and "For everyone who calls upon the name of the Lord (Jesus) will be saved" Romans 10:13.

When God created Adam and Eve in the garden of Eden, they were fully developed appearing to be perhaps 30. When He created all the plants and trees in the garden, they were probably fully grown and able to reproduce. When he created the stars there were different sizes and types such as White Dwarfs, Brown Dwarfs, Red Dwarfs, Orange Giants, and Blue Supergiants.

All the stars were created on day four. All the sunlight / starlight began on day four. At some later time, God stretched out the heavens. Thus the light we see with the Webb telescope is from the stars God created on day four and then stretched out. Scientists note the 'red shift' in the light, indicating speed, shows the Universe is still expanding.

Since the recent data from the Webb telescope does not seem to fit the "Big Bang" theory, perhaps the Biblical creation model should be explored. Isn't that the way science advances?

(Article was received for publication on 10/10/22).

*PAGE 1*

The WORLD BY DESIGN Newsletter is being emailed to you because at some time you have asked us to send you a copy of the newsletter. We hope that you will enjoy reading and staying informed about CRSEF's ministry to introduce and educate people about Young Earth Creation. If you would like to subscribe to the newsletter email us at [subscribe\\_wbd@twc.com](mailto:subscribe_wbd@twc.com). If you would like to be removed from our mailing list please send an email to us at [unsubscribe\\_wbd@twc.com](mailto:unsubscribe_wbd@twc.com).

# Kid's Fun Page

## THE WATERING HOLE

The first stop on our indoor safari is one of the most popular rooms in everyone's house—the kitchen. Why is it so popular? Delicious food, of course!

Maybe you like snacking on chips, gobbling cheesy pizza, and devouring yummy desserts. But have you ever stopped to think about where these delicious foods come from? If you're thinking the grocery store, you're right. But keep in mind that the grocery store gets these foods from a factory or bakery.

### HIDDEN OBJECTS

CAN YOU FIND THESE OBJECTS  
HIDDEN IN THE PICTURE ABOVE?



Chocolate is made from cocoa beans which come from trees.



The box that holds your cereal is an example of God's creation too. Cardboard boxes are made from paper, which is made from wood, which comes from the trees God created.



Maple syrup starts out as sap from maple trees. The sap is collected and boiled into syrup.



Sodium bicarbonate (baking soda) comes from minerals which are often present in hot springs and salt lakes. Adding baking soda to a recipe helps baked goods like cakes and cookies to rise, giving them their fluffiness.



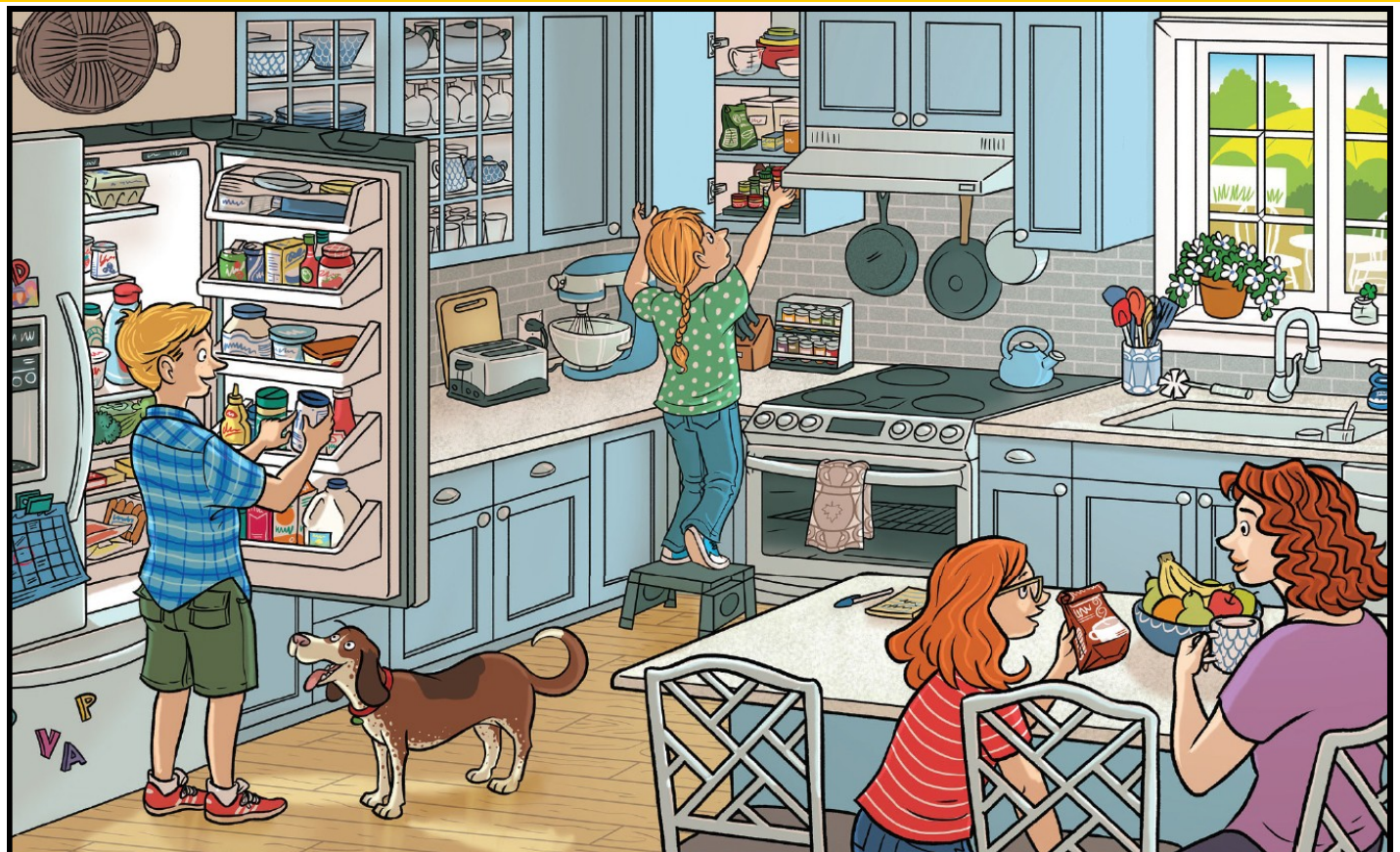
Pectin is a manufactured ingredient that comes from the cells of some fruits and vegetables and is used to make jelly.



Salt is mostly made up of a mineral called sodium chloride. Table salt mainly comes from oceans and salt mines (places where saltwater used to be, leaving salt behind).

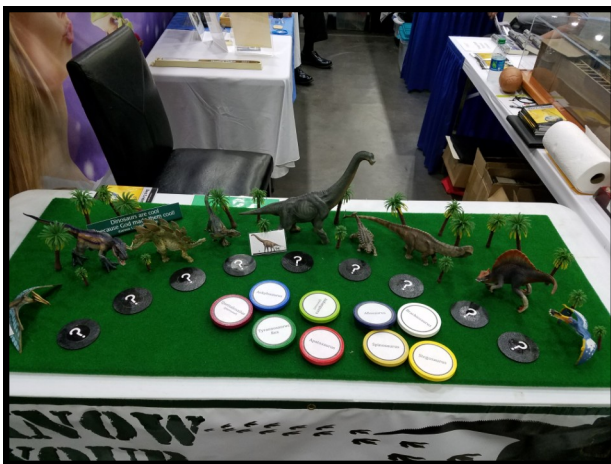
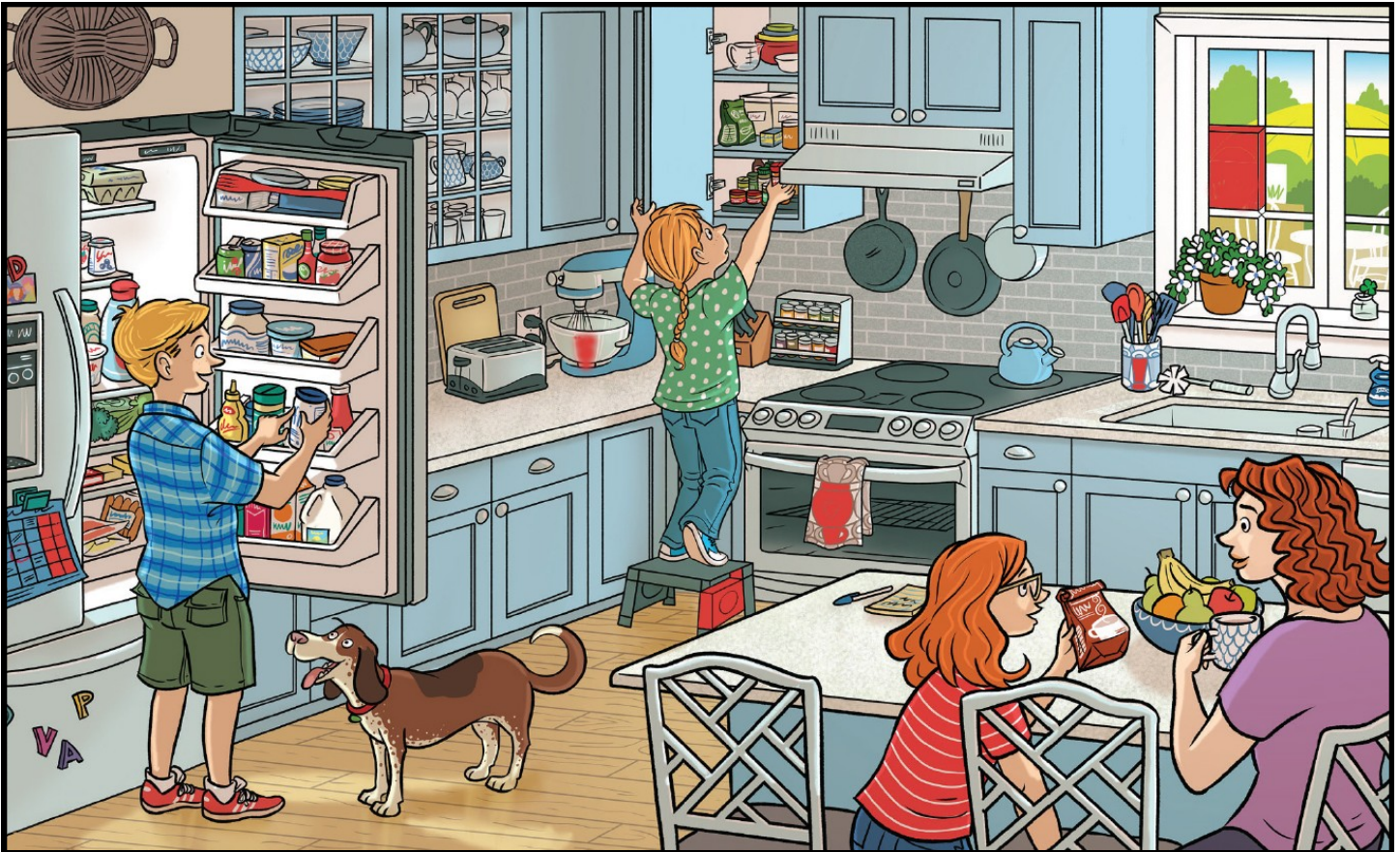


Forks and other utensils (like knives and spoons) are usually made from metals such as steel, copper, and brass.



Answers in Genesis Puzzle can be found at <https://answersingenesis.org/kids/activities/quizzes/watering-hole/>

## Kid's Fun Page Answers



Kids Dino Match Game



[PAGE 1](#)

The WORLD BY DESIGN Newsletter is being emailed to you because at some time you have asked us to send you a copy of the newsletter. We hope that you will enjoy reading and staying informed about CRSEF's ministry to introduce and educate people about Young Earth Creation. If you would like to subscribe to the newsletter email us at [subscribe\\_wbd@twc.com](mailto:subscribe_wbd@twc.com). If you would like to be removed from our mailing list please send an email to us at [unsubscribe\\_wbd@twc.com](mailto:unsubscribe_wbd@twc.com).

**Would You Please Help The Ministry Of The Creation  
Research Science Education Foundation, Inc.**

**Yes, I want To help CRSEF** promote the foundational message of biblical and scientific creationism.

**Suggested Donation:** to CRSEF, so we can sponsor events and give away creation related materials, as CRSEF determines!

\$15  \$20  \$25  \$50  I would like donate \$\_\_\_\_\_ at this time.

I would like to donate \$\_\_\_\_\_ to CRSEF on a regular basis (Weekly, Monthly, Quarterly, or Semi-annually)! **Please circle the frequency of your pledged donations.** My first installment is enclosed.

**For donations of \$25 or more, or for any pledge of making regular donations to CRSEF, we will send you a CRSEF Creation Perpetual Calendar.**

**Be sure to record your name and address on the bottom of this form.**

Mail To: CRSEF, PO Box 40226, Cincinnati, OH 45240-0226

**Please make checks payable to CRSEF.**

It is the policy of the Internal Revenue Service that all donations to a tax-exempt organization are the sole property of that organization. However, it is the policy of Creation Research Science Education Foundation, Inc. to apply all donations given toward a specific program to that program. In the event, we receive more - or less - contributions than can wisely be used toward the specified program, CRSEF will use those funds to meet other pressing needs that support the vision of CRSEF. CRSEF is a 501(c) (3) non-profit organization and gifts are tax deductible to the fullest extent allowed by law.

**Please enter your contact information, so CRSEF can contact you, if needed. This information will NOT be shared with any other organization or individual. It will only be used by CRSEF to share important information with you, as you have indicated to CRSEF!**

Name: \_\_\_\_\_ Email: \_\_\_\_\_

Phone: (\_\_\_\_\_) \_\_\_\_\_

Address: \_\_\_\_\_

City: \_\_\_\_\_ State: \_\_\_\_\_ Zip Code: \_\_\_\_\_

Please Print [Donation Form](#)

To pay with PayPal or a credit card, you may visit the World By Design Website at <https://www.worldbydesign.org/events.html>